

# FRONT LINE BARRIER MANAGEMENT

## COMPETENCY ASSESMENT

### Do I know my role incase of an emergency?

Is the crew member aware of their role and their responsibilities to be carried out in case of an emergency?

### Will I be able to carry out my responsibility?

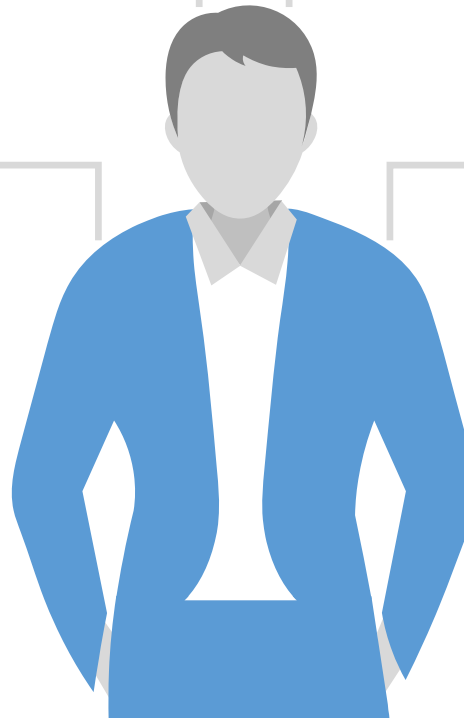
Is the crew member confident of carrying out their defined roles and responsibilities?

### How would I perform under pressure?

During an emergency, the human mind is under immense pressure and stress, is the crew adequately trained to carry out their roles in a calm and systematic manner?

### What is part of my responsibility and what is not?

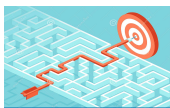
How would one know what duties falls under one crew member and is there proper segregation of roles done?





## Challenges Faced by Shell

- Is the front line crew capable of managing, supervising and managing safety critical tasks?
- Is the crew competent enough to form barrier to prevent any major accident?
- Shell must have a system that includes the setting of appropriate competence standards, assessment and reassessment, which Shell was lagging.
- There must be a specific link between Safety Critical Tasks, roles and responsibilities and a targeted comprehensive management system



## Solution Approach by Petrodia

- Inspection of the platform, helideck, living quarters, process area, well heads and emergency escape routes, identifying Safety Critical Tasks and Safety Critical Instruments.
- Setting up of competence standards, assessment structure and integrating this into the management structure of the organisation
- Experienced engineers who are SQA Certified 9Di Competency Assessors (NVQ Level 4, UK), creating assessment, competency standards
- These engineers are conducting assessments of front line crew to assess their skills and knowledge to identify any gaps thus to ensure safety critical roles and task can be carried out effectively



## Results Delivered by Petrodia

- **Increased safety culture** of the organisation, thereby **increasing** the competency of the front line crew who acts as a barrier in Major Accident Hazard.
- Increased safety will enable safe **smooth operation** of the plant, thus leading to **increased** production capabilities and sustainable share pricing because of **high safety standards**
- Conforming to **international standards of organisational safety culture**
- Cost reduction, as planned maintenance schedule enables efficient inventory management.
- Increased production as shutdowns can be planned and controlled.

